



networks@work

Quick Install Guide

Wireless 108Mbps Super-AG
XR™ USB 2.0 Adapter

WLU108AG-MC 2A
WLU108AG-MC 6A RoHS Lead-Free Version



TABLE OF CONTENTS

| | | |
|-----------|--|-----------|
| 1: | INTRODUCTION | 1 |
| | PACKAGING CONTENT..... | 2 |
| 2: | DRIVERS & UTILITY INSTALLATION..... | 3 |
| 3: | REMOVE USB ADAPTER FROM THE SYSTEM..... | 11 |
| 4: | UN-INSTALL USB ADAPTER'S UTILITY..... | 13 |

1: Introduction



The Complex iWavePort WLU108AG Wireless 108Mbps Super-AG XR™ USB 2.0 adapter now comes equipped with a MC connector for convenient connection to Complex External Range extenders that allow you to boost your wireless

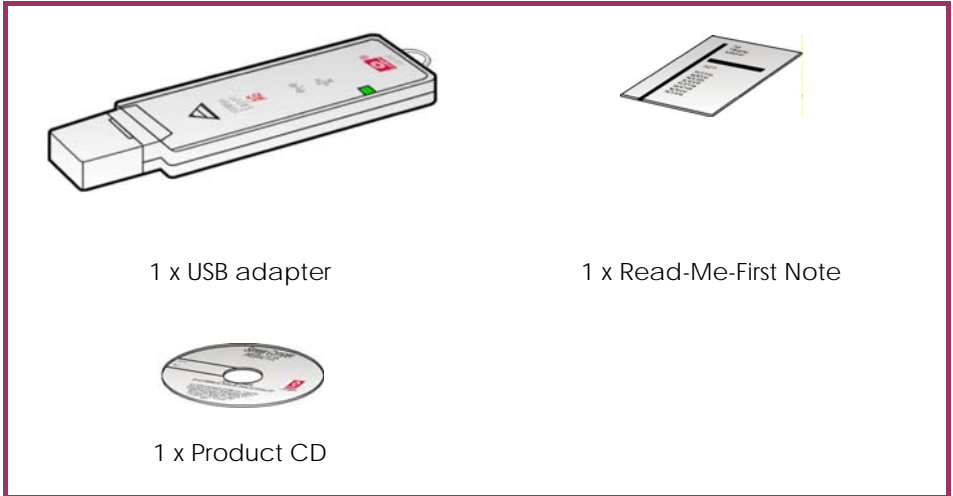
connection range further. This USB adapter delivers the performance and capabilities that every mobile user is looking for. The built-in Atheros Super AG technology provides higher throughput at 802.11a (5GHz) vs. 802.11g's congested 2.4GHz band and the ability to operate in more channels. Embedded with Atheros chipset, it boasts network robustness, stability and wider coverage for long-range connectivity. Despite its small size, the USB adapter is big on features; compatibility with wireless 802.11a/b/g networks ensures that you can be connected easily. Super AG compatibility allows fast transfer rates of up to 108Mbps at 5GHz.

Bandwidth needs in the home are increasing rapidly with the introduction of new devices and services. As broadband infrastructure becomes common in homes, the demand for multimedia services such as video streaming or VoIP also increases. This will cause the already crowded 802.11g(2.4GHz) bandwidth to maximize its load. The USB adapter makes use of the 802.11a "ClearVoice" band to avoid collision of bandwidth usage. Equipped with a MC connector for convenient connection to an external antenna, the USB adapter helps to boost your wireless connection range further.

Connecting to a wireless LAN without adequate security measures generally opens up your shared folders to any casual snoopers. To protect your privacy, the USB adapter is armed with many enhanced wireless security features such as Wi-Fi Protected Access (WPA), IEEE 802.1x Authentication and 64/128/152-bit WEP (Wired Equivalent Privacy) to ensure privacy for the heterogeneous mix of users within the same wireless LAN while maintaining full access to the establishment's resources.

Packaging Content

Actual product appearance may slightly differ depending on the hardware version.



Important notes to remember:

- ◆ The USB adapter can be operated in either 802.11a mode or 802.11g but not both modes at the same time.
- ◆ Designed with a USB2.0 interface, the USB adapter can provide 40 times higher throughput when connected to the USB2.0 slot of your PC/notebook. It is also backwards compatible with USB1.1 though the throughput will then be limited to the 12Mbps of the USB1.1 standard.
- ◆ The router/AP that you are connecting to using the USB adapter must be enabled with Super AG technology in order to achieve higher throughput.

2: Drivers & Utility Installation

The following installation process is based on Windows XP.

Step 1

Insert the USB adapter directly into the USB slot of your PC/notebook.

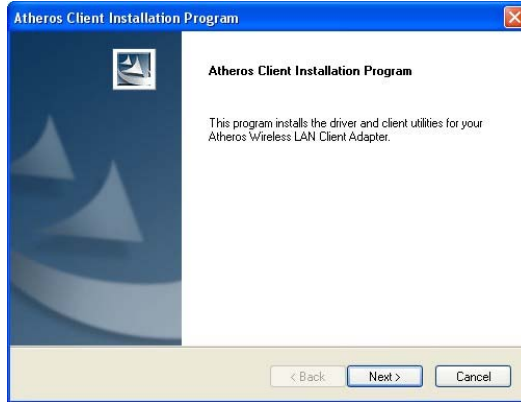


Step 2

Next, insert the Product CD into your computer CD-ROM drive. Click on **Utilities** and the system will run the *setup.exe* automatically.

Step 3

Next, the **Atheros Client Installation Program** screen appears. Click on the **Next>** button to proceed.



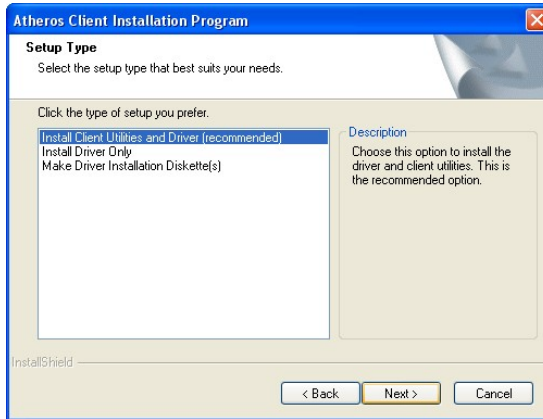
Step 4

When the License Agreement screen appears, you are required to read and accept the agreement to continue. Click on the **Next>** button to proceed.



Step 5

Select your preferred setup:

**Install Client Utilities and Driver (Recommended) option**

You are recommended to select this setup type. This option will install both the drivers and utility that support your USB adapter.

Install Driver Only option (For Windows XP user only)

Select this option if you are going to use the Wireless Zero Configuration Utility to configure your USB adapter. Note that only Windows XP comes with the Wireless Zero Configuration Utility.

Make Driver Installation Diskette(s)

Select this option if you wish to make a duplicate copy of the drivers and store in the diskette/s.

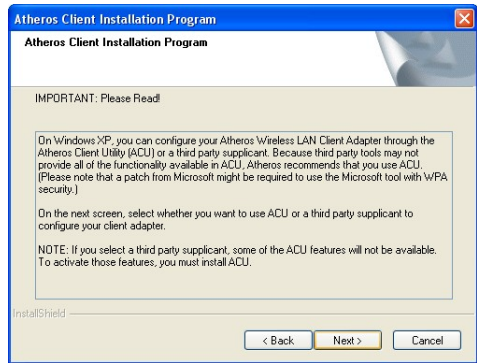
Step 6

Click on the **Next>** button and follow the instructions stated on the screen.

Step 7

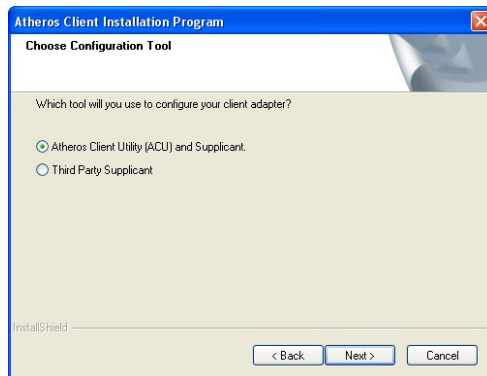
For Windows XP users,

If you are using Windows XP as operating system, the following screen will appear. Read the notice carefully and click on the **Next>** button to proceed.



Step 8

Select your choice of tool to assist you in configuring your USB adapter. Click on the **Next>** button to proceed.



Atheros Client Utility (ACU) and Supplicant option

Select this option to install your USB adapter's utility. (Recommended)

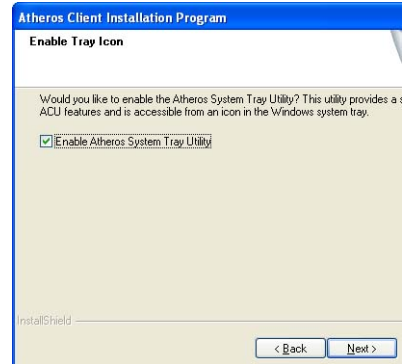
Third Party Supplicant option

Select this option if you decide to use Wireless Zero Configuration Utility to configure your wireless device. Installing this tool will only allow you to view the status of the connected wireless device/s; configuration using the USB adapter's utility will not be allowed.

Third Party Supplicant option (continued.)

If you have selected **Third Party Supplicant** configuration tool, a screen similar to that on the right will appear, prompting you to enable/disable the system tray icon.

Click on the checkbox besides **Enable Atheros System Tray Utility** and click on the **Next>** button to proceed.

**Step 9**

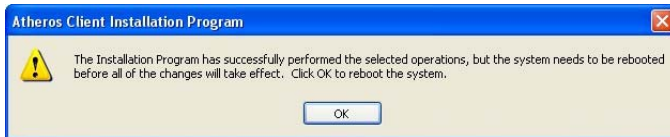
The screen below appears to inform you that the installer will automatically install the driver if you have inserted your client adapter.



Cancel the **Found New Hardware** Wizard if it appears and click on the **OK** button to begin the installation.

Step 10

Click on the **OK** button to reboot your system and this will complete the installation.



To confirm if the driver has been successfully installed on your system,

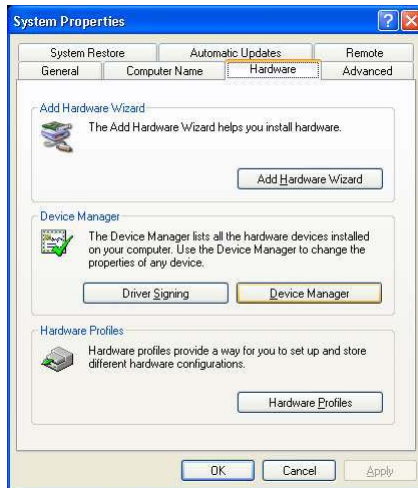
Step 1

Proceed to your desktop, right click on **My Computer** and select **Properties**.



Step 2

Select the **Hardware** tab and click on **Device Manager**.



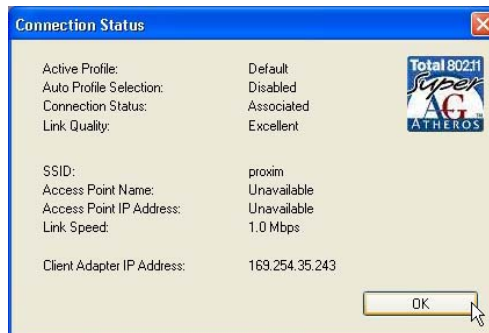
The folder name, **Atheros USB 2.0 Wireless Network Adapter** will appear in the **Network Adapters** section. This indicates that the driver for the USB adapter has been successfully installed on your system!



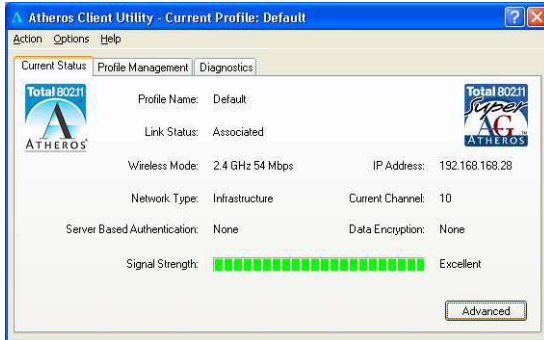
To activate the utility program, double click on the icon shown in the system tray.



Once you click on the utility option, the following screen will appear to give you a glimpse of your connection status. To exit it, click **OK**.



To use the **Atheros Client Utility**, go to the **Start** Menu followed by **Programs**. Then select **Atheros**. From **Atheros**, select **Atheros Client Utility**. You may now start to configure your USB adapter.



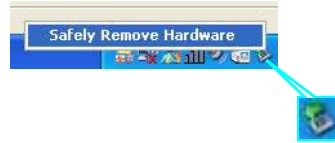
For details on using the utility, refer to the User's Manual stored in the Product CD.

3: Remove USB Adapter from the System

To safely remove your USB adapter from your system,

Step 1

From the system tray, go to **Safely Remove Hardware** icon and click **Safely Remove Hardware**.



Step 2

Select **Atheros USB 2.0 Wireless Network Adapter** and click on the **Stop** button to terminate all activities.



Step 3

Next, select **Atheros USB 2.0 Wireless Network Adapter** to confirm you will be removing it from the USB port and click on the **OK** button.



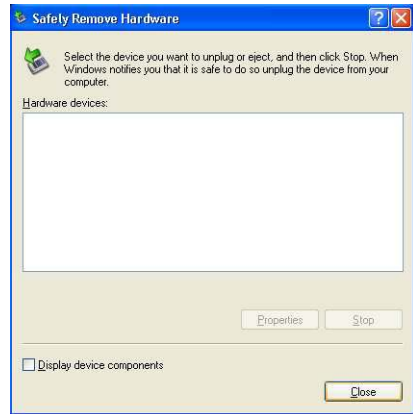
Step 4

The system will then inform you that the device can now be safely removed from the system.



Step 5

Click on the **Close** button to exit this window.



4: Un-install USB Adapter's Utility

Please note that in case there is a software upgrade for the USB adapter, you will need to un-install the current software version before installing the new software.

Also note that if you wish to un-install BOTH the drivers and utility, do not remove your USB adapter from the USB slot of your PC/notebook.

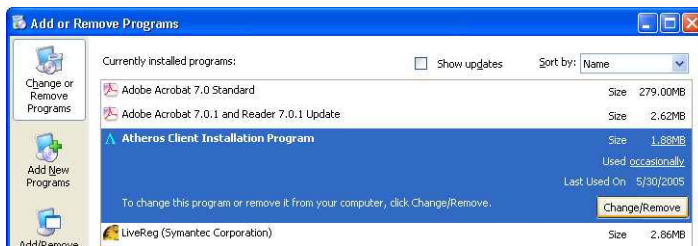
When you un-install the USB adapter software, any existing profiles will be removed. If you want to re-use your profiles, please refer to the User's Manual for further details on how to export a profile to disk. You are advised to close all programs before un-installing your USB adapter.

Step 1

From your **Start** menu, go to **Settings, Control Panel** and then click on the **Add or Remove Programs** icon.

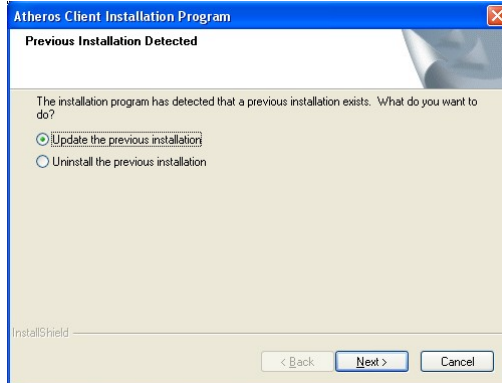
Step 2

Highlight the **Atheros Client Installation Program** and click on the **Change/Remove** button.



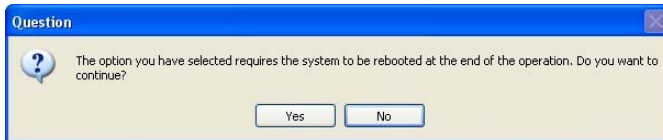
Step 3

Wait until you see the **Atheros Client Installation Program** screen. Select **Uninstall the previous installation**. Then click on the **Next>** button to proceed.



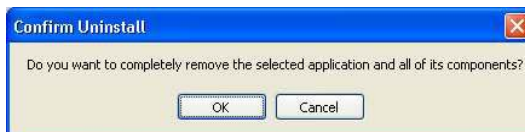
Step 4

The prompt screen appears to notify you that the uninstall option requires the system to be rebooted at the end of the uninstall process. Click on the **Yes** button to proceed.



Step 5

Your system will prompt you to confirm whether you want to remove the application completely. Click **OK** to proceed.



Step 6

After about 30 seconds, you will be asked to decide whether to remove the device driver or not. If **Yes**, the device driver will be removed. Otherwise if **NO**, the device driver will not be removed.

Step 7

Once you have made your decision, the uninstall process will begin. Soon the prompt screen will appear informing you that the uninstall process is successful, and that your system needs to be rebooted.

Click **OK** to reboot the system.

Further Information References

This document may become superseded, in which case you may find its latest version at: <http://www.compex.com.sg>

Disclaimer: **Compex, Inc.** provides this guide without warranty of any kind, either expressed or implied, including but not limited to the implied warranties of merchantability and fitness for a particular purpose. Compex, Inc. may make improvements and/or changes to the product and/or specifications of the product described in this guide, without prior notice. Compex, Inc will not be liable for any technical inaccuracies or typographical errors found in this guide. Changes are periodically made to the information contained herein and will be incorporated into later versions of the guide. The information contained is subject to change without prior notice.

Trademark Information: **Compex**[®], **ReadyLINK**[®] and **MicroHub**[®] are registered trademarks of **Compex, Inc.** **Microsoft Windows** and the **Windows logo** are the trademarks of **Microsoft Corp.** **NetWare** is the registered trademark of **Novell Inc.** All other brand and product names are trademarks or registered trademarks of their respective owners.

Notice: Copyrights © 2006 by Compex, Inc. All rights reserved. Reproduction, adaptation, or translation without prior permission of Compex, Inc. is prohibited, except as allowed under the copyright laws.

Manual Revision by Daniel

Manual Number: M-0550-V1.2C Version 1.2, September 2006

FCC NOTICE: This device has been tested and found to comply with the limits for a **Class B** digital device, pursuant to **Part 15 of the FCC Rules**. These limits are designed to provide reasonable protection against harmful interference in a residential installation. This device generates, uses and can radiate radio frequency energy and, if not installed and used in accordance with the instructions, may cause harmful interference to radio communications. However, there is no guarantee that interference will not occur in a particular installation. If this device does cause harmful interference to radio or television reception, the user is encouraged to try to correct the interference by one or more of the following measures:

- ♦ Reorient or relocate the receiving antenna.
- ♦ Increase the separation between the computer and receiver.
- ♦ Connect the computer into an outlet on a circuit different from that to which the receiver is connected.
- ♦ Consult the dealer or an experienced radio / TV technician for help.

Caution: Any changes or modifications not expressly approved by the grantee of this device could void the user's authority to operate the equipment.

FCC Compliance Statement: This device complies with Part 15 of the FCC Rules. Operation is subject to the following two conditions:

- (1) This device may not cause harmful interference, and
- (2) This device must accept any interference received, including interference that may cause undesired operation.

Products that contain a radio transmitter are labeled with FCC ID and may also carry the FCC logo.

Caution: Exposure to Radio Frequency Radiation.

To comply with the FCC RF exposure compliance requirements, the following antenna installation and device operating configurations must be satisfied:

- a. For configurations using the integral antenna, the separation distance between the antenna(s) and any person's body (including hands, wrists, feet and ankles) must be at least 2.5cm (1 inch).
- b. For configurations using an approved external antenna, the separation distance between the antenna and any person's body (including hands, wrists, feet and ankles) must be at least 20cm (8 inch).

The transmitter shall not be collocated with other transmitters or antennas.

ICES 003 Statement

This Class B digital apparatus complies with Canadian ICES-003.

DECLARATION OF CONFORMITY: *Compex, Inc. declares that the product:*

Product Name: Compex Wireless 108Mbps Super-AG XR™ USB 2.0 Adapter

Model No.: WLU108AG-MC conforms to the following Product Standards:

This device complies with the Electromagnetic Compatibility Directive (89/336/EEC) issued by the Commission of the European Community. Compliance with this directive implies conformity to the following European Norms (in brackets are the equivalent international standards.)

Electromagnetic Interference (Conduction and Radiation): EN 55022 (CISPR 22)

EMC Standards: FCC Part 15: Subpart B, Subpart C, Subpart E; CE: EN 301 893, EN 300 328, EN 301 489-1, EN 301 489-17

Low Voltage Directive: EN 60 950-1: 2001.

Therefore, this product is in conformity with the following regional standards: FCC Class B - following the provisions of FCC Part 15 directive; CE Mark - following the provisions of the EC directive.

Manufacturer's Name: Compex, Inc.

Address: 840 Columbia Street, Suite B

Brea, CA 92821, USA

WARRANTY REGISTRATION CARDRegister via the Internet at <http://www.cpx.com>
or <http://www.compex.com.sg>

[M-0088-V2.4C]



To activate the warranty, please complete this card and return to Compex within ninety 90 days from the date of purchase.

Please e-mail this warranty card to support@compex.com.sg.

| | | | |
|------------------|----------------|----------|------------|
| Product: | Purchase Date: | Model: | Serial No: |
| Name: | | E-mail: | |
| Company: | | | |
| Address: | | | |
| Postal/Zip Code: | | Country: | |
| Phone: () | | | |

Note:

For purchases within U.S.A and Canada, please fax to Compex, Inc. at (714) 482 0332

For purchases outside U.S.A and Canada, please fax to Compex Systems Pte Ltd at (65) 6280-9947

Manual Number:
M-0550-V1.2C
Version 1.2
September 2006

